



# HSM PET Waste Disposal Solutions

Draining – Perforating – Crushing – Compressing – Briquetting

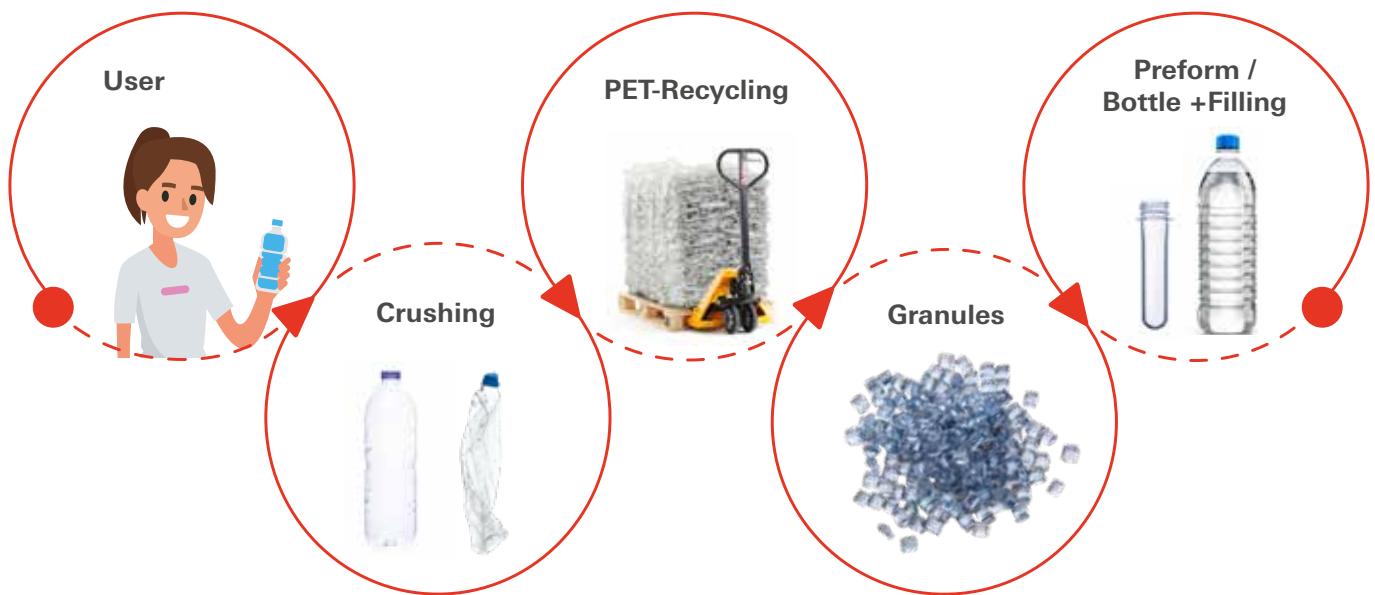


## Our consumer habits require new solutions.

500 billion PET bottles are produced annually worldwide. For the production of 1 kg PET bottles 1.9 kg of oil is required. This piece of information alone shows that it is vital to recycle used PET bottles. More than 90 % of all PET bottles are non-returnable bottles. Since PET can be recycled 100 %, it is an important link in the material cycle, particularly in the production of fibres for textile production, foils, packing straps and even furniture.

HSM has been dealing with this challenge for many years now and, using its extensive know-how in the environmental sector, has been developing tailor-made solutions for effective PET recycling.

A world without bottles made of polyethylene-terephthalate, PET for short, is no longer imaginable. New solutions for the disposal of this material are therefore necessary, since both social and political opinion expects the bottles to be fully recycled.



## HSM quality "Made in Germany"

HSM has always adhered to quality principles, whether in development and construction, production, project planning or service. All HSM plants are certified according to DIN EN ISO 9001 and work towards the creation of long-lasting products that retain the value of the HSM brand long into the future.

The clear belief in German production is a part of the responsibility that comes with being an integral part of the regional community. In HSM plants, motivated and highly-skilled professionals are dedicated to securing the position of HSM in Germany.





## You can prift from the value chain - with HSM

HSM has solutions to cover all aspects of PET recycling. Our experience over many years as pioneers in PET compression, combined with the HSM "Made in Germany" quality, means that we are your ideal partner for profitable PET recycling.

Our extensive product portfolio includes:

- Machine for draining PET containers
- PET perforators
- PET crusher-press combination
- HSM baling presses developed especially for the compression of PET-bottles
- Briquetting press for the fully automatic compression of PET-bottles





## Draining

### HSM PET FluidEx 600

The HSM PET FluidEx 600 empties quickly and reliably those full PET bottles, carton based packaging containers and cans which have been filled or labelled incorrectly or where the sell-by date has been exceeded.

The containers thrown in via the loading funnel are pulled in by the 2-roller mechanism and almost completely emptied. Small pieces of plastic and labels are removed from the liquid using a filter system and the liquid is then discharged using a dedicated system. The hinged loading funnel means that the machine can be easily cleaned. A high performance, low space requirement and the possibility to integrate the machine into existing recycling processes are the decisive advantages of the HSM PET FluidEx 600.

- Perforation of full PET bottles, carton based packaging containers and cans
- Containers emptied by up to 98 %
- Optimum removal of any remaining liquids using the 2 shaft technology
- Low space requirement
- Both manual and automatic filling possible
- Cutting unit made of specially hardened steel, other machine frame parts made of stainless steel
- Durable and robust – for a long life-cycle
- Intake shafts ensure that the PET bottles are fed reliably into the cutting unit
- Specific discharge system for liquids via hose or pump
- Easy to clean due to inspection door and hinged outlet chute
- Ideal as compliment to the HSM baling presses



Emptying and compression of the material in one step



Containers emptied by up to 98 %

Model	HSM PET FluidEx 600
Throughput per hour PET bottles (1 litre)	10000
Working width in mm	600
Loading height in mm	approx. 1270
Motor in kW	3.0 perforator / 4.0 screw
Voltage / Frequency	3 x 400 V / 50 Hz
Machine dimensions (W x L x H) in mm	1215 x 3304 x 1775
Machine weight in kg	approx. 1230

All technical data and dimensions are approximate values. Technical and design changes reserved.





## Perforating

### HSM PET Perforator PF 600-4 and PF 1200-4

HSM perforators effectively perforate PET-bottles before compaction thus creating an optimum compact bale. The perforators HSM PET PF 600-4 and PF 1200-4 have very high throughput capacities with excellent price/performance ratios and complete the HSM range of disposal systems.

- Perforation of empty and/or full plastic bottles (max. approx. 2.5 litre) is possible, with or without caps
- Perforation of the plastic bottles achieves optimum compression for reduced transport and storage costs
- Sturdy cutting unit – will handle the occasional glass bottle
- Ideal as an option for the HSM VK- / AK channel baling presses or alternatively as an independent system
- Perforator may be mounted in a loading chute, moved manually or automatically / hydraulically to allow compression of alternative materials which do not need perforation
- Applicable for all systems using underframe and hopper with conveyor-belt, also possible for retrofitting to existing systems



The HSM perforator is ideal for multipurpose applications ...



... with several methods of loading.



High volume plastic bottles transformed ...



... into compact easily handled bales.

Model	HSM PET Perforator PF 600-4	HSM PET Perforator PF 1200-4
Throughput per hour PET bottles (1 litre)	37500	75000
Working width in mm	600	1200
Throughput capacity in m <sup>3</sup> /h	50-60	100-120
Motor in kW	2 x 3.0	2 x 4.0
Voltage / Frequency	3 x 400 V / 50 Hz	3 x 400 V / 50 Hz
Machine dimensions (W x L x H) in mm	990 x 1200 x 500	1560 x 1200 x 500
Machine weight in kg	approx. 670	approx. 950

All technical data and dimensions are approximate values. Technical and design changes reserved.



## Crushing

### HSM PET Crusher 1049 SA

This HSM solution reduces the space requirement for returned containers to approx. 25 to 30 percent of the original volume, thus also reducing the time required for disposal.

The special roller system perforates and crushes the containers. The sidewalls mesh into each other, making the reduction in volume permanent. Crushing has an additional advantage: deposit plastic bottles and cans are reliably invalidated.



Crusher rollers made of specially hardened steel



PET bottle original and crushed

- An efficient system for the volume reduction of PET bottles and cans down to 1/3 or 1/4 of the original
- Crusher rollers made of specially hardened and ground steel, completely resistant to wear and very strong, for a long service life
- A scraper system removes the compressed plastic bottles and cans from the crusher rollers to prevent blockages and downtime while clearing
- A dosing shaft with integrated blades ensures that the plastic bottles and cans are fed reliably
- Manual control of the machine via easy-to-use keypad with forward, reverse and stop functions
- LED display provides information on the current status of the machine (ready, overload, door open, container full)
- Automatic switch off after two minutes to save energy
- The cutting head can also be used in combination with a deposit return machine.
- Available for continuous operation

Model	HSM PET Crusher 1049 SA
Throughput of 1 litre PET bottles / per cycle	50-70
Throughput per hour PET bottles (1 litre)	up to 2400
Volume reduction at a ratio of	1:3 to 1:4
Working width in mm	490
Loading height in mm	1206
Bottle diameter in mm	50-120
Motor in kW	1.5 / 3.0
Voltage / Frequency	230 V / 3 x 400 V / 50 Hz
Machine dimensions (W x L x H) in mm	793 x 1751 x 2037
Machine weight in kg	230 / 288

All technical data and dimensions are approximate values. Technical and design changes reserved.



## Crushing and Compressing

### HSM PET CP 4988

This efficient PET recycling system reduces the volume of empty PET bottles by up to 90 % in one cycle and produces compact raw material bales.

A dosing shaft ensures that the bottles are drawn in securely and achieves a throughput capacity of up to 4000 (1 litre) bottles every hour. The drainage system discharges all residual fluid before pressing. With a pressing power of 11 tonnes, the downstream baling press compresses the crushed bottles into raw material bales with a weight of up to 100 kg.

- Efficient PET recycling system to reduce the volume of empty PET bottles by up to 90 % and produce compact raw material bales
- Low space requirement
- Manual and automatic filling possible
- Crusher rollers made of specially hardened and ground steel, impervious and sturdy – for a long service life
- Scraper system removes the compressed plastic bottles reliably from the crusher rollers
- Dosing shaft with several paddles ensures that the PET bottles are reliably fed to the rollers
- Automatic photoelectric control of the pressing process
- Manual, 3-fold strapping with continuous polyester strap
- Display to indicate “bale ready”



Large loading hopper



The drainage system controls the discharge of residual fluid

Model	HSM PET CP 4988
Throughput per hour PET bottles (1 litre)	up to 4000
Working width in mm	490
Loading height in mm	1511
Pressing power in kN	100
Bale weight in kg (for 1200 mm in length)	up to 100
Bale size (W x H x L) in mm	500 x 500 x max. 1200
Voltage / Frequency	3 x 400 V / 50 Hz
Motor in kW	2.2 Crusher / 4.0 Press
Machine dimensions (W x L x H) in mm	990 x 3826 x 1800
Machine weight in kg	1150

All technical data and dimensions are approximate values. Technical and design changes reserved.



## Compressing

### HSM V-Press 860 P

Due to its size, cost efficiency and capacity, this vertical baling press is incredibly well-suited for industry, manufacturers and retailers alike.

With this compact baling press you can reduce the volume of your on-site packaging material by up to 95 %. The vertical baling press HSM V-Press 860 P is specially designed for the compression of opened or perforated PET/UBC bottles (other materials upon request).

- Secure filling flap and bale removal door
- Robust, user-friendly bale ejection device
- Compact and sturdy design, small footprint, large loading aperture
- Modern microprocessor controller with membrane keypad and text display
- TCS (Torsion Control System) for monitoring press ram movement
- Double quantity of retaining claws optimizes the compression of the pressing material and reduces the number of loading actions
- Reinforced press chamber and door lock
- Robust mechanical bale ejector chain



Loading flap for PET

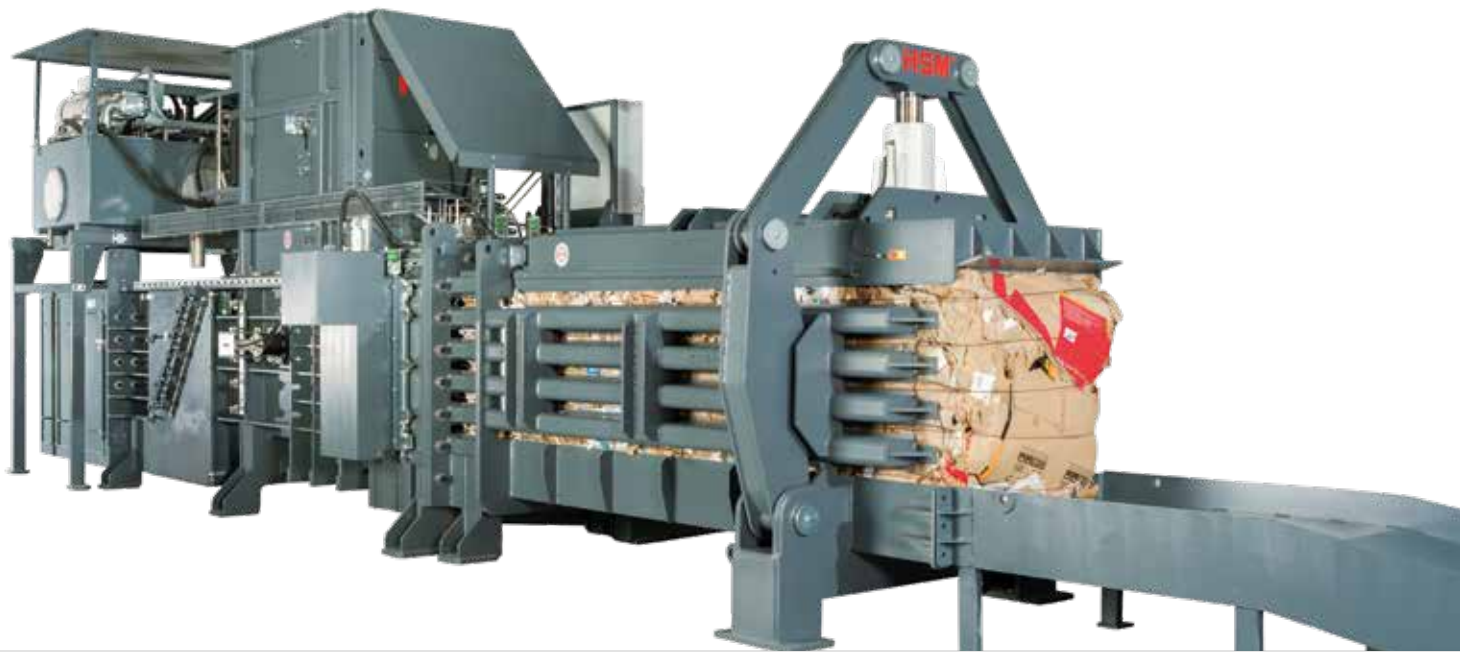


Reinforced door lock

Model	HSM V-Press 860 P
Pressing power in kN	434
Motor in kW	4.0
Voltage / Frequency	3 x 400 V / 50 Hz
Loading aperture (W x H) in mm	1195 x 650
Bale weight in kg (depending on material)	approx. 230
Max. bale size (W x H x L) in mm	1200 x 780 x max. 1200
Cycle time in idle operation (theor.) in sec.	25
Press chamber size (W x D x H) in mm	1195 x 780 x 1640
Machine dimensions (W x L x H) in mm	1870 x 1294 x 2985
Machine weight in kg	2290
Strapping	4-fold with wire

All technical data and dimensions are approximate values. Technical and design changes reserved.





## Compressing

### **HSM Fully Automatic Channel Baling Presses –** individual system solutions, custom disposal systems

HSM does not just offer hardware alone, but provides individual system solutions as well. When it comes to demanding systems, you can benefit from our extensive know-how and broad experience.

Experienced HSM specialists assist you right from the start on site and provide ongoing support and service. With the wide range of options and accessories, our disposal solution can be fully integrated into your existing operation and processes. The individualised design makes the entire system efficient.

Get in touch with us and HSM will find the right solution for your individual requirements.

- Application areas: logistics, central storages, paper industry, printing plants, distribution centres, industry, disposal companies
- Suitable for the following material: cardboard, paper, films (PPK), DSD, PET/UBC, composite materials and more
- Feeding: mainly continuous feeding via several systems (e.g. conveyor-belt, forklift, suction system etc.)
- Fully automatic compression and bale strapping
- Up to 1500 kN pressing power
- Bale weights up to 1250 kg
- All kinds of feeding possible
- Available as an option with frequency-controlled drive – saves 40 % of the energy used by standard drives



HSM VK 8818 R · Euro Pool System International B.V. · Budapest/Hungary

## Our references



On request, we would be glad to provide you with reference addresses for your applications.



## Compressing

### HSM VK 1206

The bestseller in the small to medium HSM range – tried and tested for years, reliable and with multiple uses. Particularly suitable for compressing cardboard, film and PET bottles / UBC.

- Volume throughput up to 1.8 t/h
- Suitable for continuous loading
- Operating side can be selected
- Control of compression cycle via light barrier
- Compact bale dimensions
- Low space requirement
- Suitable for applications with a throughput up to approx. 92 m<sup>3</sup>/hour
- Optimal for connecting to air feeding systems (fast cycle times) – 600 mm loading aperture
- Particularly suitable for cardboard, film and PET bottles / UBC

### HSM VK 2306

The HSM VK 2306 is comparable with the HSM VK 1206, but features a higher pressing power. It produces highly compressed PET bales which are marketable immediately – no additional compression required.

- Volume throughput up to 5.6 t/h
- Suitable for continuous loading
- Operating side can be selected
- Control of compression cycle via light barrier
- Compact bale dimensions
- Low space requirement
- Suitable for applications with a throughput up to approx. 113 m<sup>3</sup>/hour
- High bale density, higher bale weights compared to HSM VK 1206
- Particularly suitable for cardboard, film and PET bottles/UBC
- Available as an option with manual strapping

Model	HSM VK 1206	HSM VK 2306
Pressing power in kN	160	240
Main driving power in kW	9.2	9.2 / 15
Specific pressing power in N/cm <sup>3</sup>	42.7	64.0
Cycle time in idle operation (theor.) in sec.	8.2	12.3 / 6.7
Volume throughput in idle operation (theor.) in m <sup>3</sup> /h	99	66 / 121
Max. bale size (W x H x L) in mm	750 x 500 x var.	750 x 500 x var.
Loading aperture (W x H) in mm	670 x 600	670 x 600
Bale weight in kg (depending on material with 1200 mm bale length)	up to 100	up to 130
Machine dimensions (W x L x H) in mm	3450 x 2450 x 1940	5120 x 2700 x 1940
Machine weight in t	3.4	3.5 / 3.9
Strapping (fully automatic)	3-fold with wire	3-fold with wire

All technical data and dimensions are approximate values. Technical and design changes reserved.





## Compressing

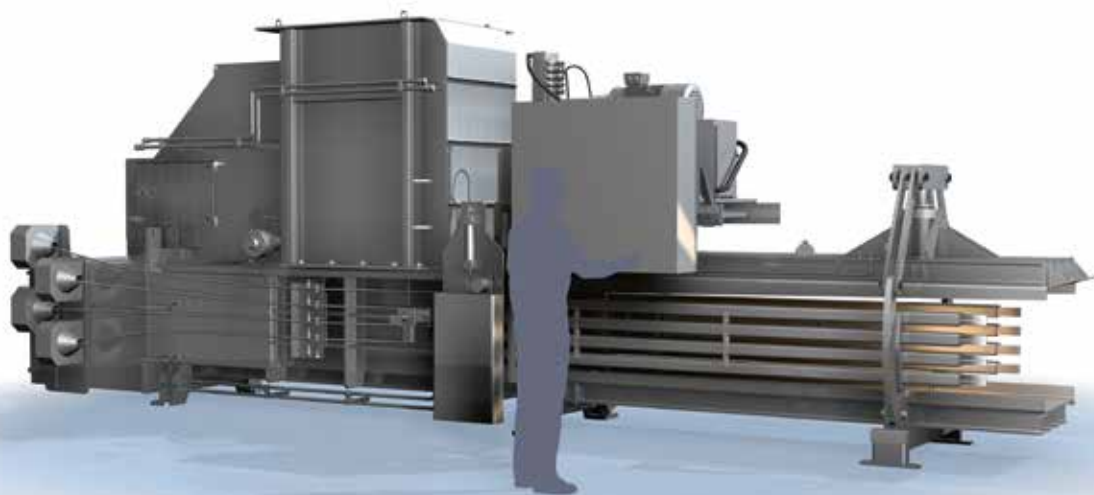
### HSM VK 4812 P

HSM channel baling press for professional disposal management or larger industrial applications – with high throughput rates especially for compressing PET bottles.

- Suitable for applications with a throughput up to approx. 204 m<sup>3</sup>/ hour
- Particularly suitable for compression of cardboard, film, DSD goods and much more on request
- Suitable for continuous loading
- 4-fold strengthened strapping for the optimum bale result
- Optimised bale dimensions and bale weights for efficient truck loading
- Large loading aperture, quick mode of operation
- Control of compression cycle via light barrier
- High compression level
- Press chamber with highly wear-resistant steel “XAR” for low wear and tear
- Strengthened retention system prevents re-expansion
- Rear loading possible

Model	<b>HSM VK 4812 P</b>
Pressing power in kN	480
Main driving power in kW	15 / 22
Specific pressing power in N/cm <sup>3</sup>	58.2
Cycle time in idle operation (theor.) in sec.	24.5/18.2
Volume throughput in idle operation (theor.) in m <sup>3</sup> /h	151/204
Max. bale size (W x H x L) in mm	1100 x 750 x var.
Loading aperture (W x H) in mm	1020 x 1250
Bale weight in kg (depending on material with 1200 mm bale length)	up to 375
Machine dimensions (W x L x H) in mm	6820 x 2570 x 2791
Machine weight in t	approx. 10.0
Strapping (fully automatic)	4-fold with wire

All technical data and dimensions are approximate values. Technical and design changes reserved.



## Compressing

### HSM VK 6015

For industrial applications with special requirements in pressing PET.

- Suitable for applications with a throughput up to approx. 291 m<sup>3</sup>/hour
- Very high specific pressure – for high compaction
- High shearing force
- 4-fold strapping for optimised bale result
- Also suitable for materials with bulk weights higher than 60 kg/m<sup>3</sup>
- Large loading aperture, quick mode of operation
- Control of compression cycle via light barriers
- Approved system solution and technology
- Optimised bale dimensions and bale weights for efficient truck loading
- High compression and bale weights
- Available as an option with frequency-controlled drive – saves 40 % of the energy used by standard drives
- For continuous operation with all standard conveyor and feeding facilities
- Particularly suitable for cardboard, paper and film and also for compressing DSD goods

Model	HSM VK 6015
Pressing power in kN	720
Main driving power in kW	30 / 45 / 55 (with FU 45) / 75 (with FU 55) / 90 (with FU 75)
Specific pressing power in N/cm <sup>3</sup>	128.0
Cycle time in idle operation (theor.) in sec.	23.7 / 16.5 / 13.2 / 10.4 / 8.9
Volume throughput in idle operation (theor.) in m <sup>3</sup> /h	128 / 184 / 231 / 291 / 340
Max. bale size (W x H x L) in mm	750 x 750 x var.
Loading aperture (W x H) in mm	620 x 1500
Bale weight in kg (depending on material with 1200 m bale length)	up to 270 kg
Machine dimensions (W x L x H) in mm	10500 x 3789 x 3260
Machine weight in t	24.0
Strapping (fully automatic)	4-fold

All technical data and dimensions are approximate values. Technical and design changes reserved.





## Briquetting

### HSM BRP 4810

The HSM BRP 4810 briquetting press compacts huge amounts of PET bottles and beverage cans with ease, fully automatically.

- No strapping of the briquettes needed
- Briquetting density of approx. 400 kg/m<sup>3</sup> (PET/UBC) and approx. 760 kg/m<sup>3</sup> (aluminium beverage cans) thanks to multistage compaction
- Driving power through a highly efficient and low maintenance PowerPack
- For continuous loading
- Optimal pressing plate guidance
- Robust construction made of wear-free steel



Operation in 1<sup>st</sup> stage



Operation in 2<sup>nd</sup> stage



Operation in 3<sup>rd</sup> stage



Briquettes

Model	HSM BRP 4810
Pressing power in kN	477
Volume throughput in idle operation (theor.) in m <sup>3</sup> /h	55
Loading aperture (W x L) in mm	1600 x 1100
Cycle time in idle operation (theor.) in sec.	28.4
Briquette size (W x H x L) in mm	250 x 250 x var.
Dimensions of machine (W x D x H) in mm	2860 x 4260 x 2380
Machine weight in kg	approx. 8700

Technical and design modifications reserved. All technical data and dimensions are approximate values.

## Technical details at a glance:

Model	Throughput per hour PET bottles (1 litre)	Working width in mm	Loading height in mm	Motor in kW	Voltage / Frequency	Machine dimensions (W x L x H) in mm	Machine weight in kg
<b>HSM FluidEx 600</b>	10000	600	1270	3.0 / 1 x 4.0	3 x 400 V / 50 Hz	1215 x 3304 x 1775	approx. 1230
<b>HSM PET Perforator PF 600-4</b>	37500	600	-	2 x 3.0	3 x 400 V / 50 Hz	990 x 1200 x 500	approx. 670
<b>HSM PET Perforator PF 1200-4</b>	75000	1200	-	2 x 4.0	3 x 400 V / 50 Hz	1560 x 1200 x 500	approx. 950
<b>HSM PET Crusher 1049 SA</b>	up to 2400	490	1206	1.5 / 3.0	230 V / 3 x 400 V / 50 Hz	793 x 1571 x 2041	approx. 230 / 288

Model	Throughput per hour PET bottles (1 litre)	Working width in mm	Loading height in mm	Loading aperture (W x H) in mm	Pressing power in kN	Bale weight in kg (for 1200 mm in length)	Bale size (W x H x L) in mm
<b>HSM PET CP 4988</b>	up to 4000	490	1511	-	100	up to 100	500 x 500 x max. 1200
<b>HSM V-Press 860 P</b>	-	-	-	1195 x 650	434	approx. 230	1200 x 780 x max. 1200
<b>HSM BRP 4810</b>	55 m³/h	-	-	1600 x 1100	477	-	250 x 250 x var.

Model	Main driving power in kW	Main driving power with FC in kW	Pressing power in kN	Specific pressing power in N / cm³	Cycle time in idle operation (theor.) in sec	Volume throughput in idle operation (theor.) in m³ / h	Volume throughput at 20 kg / m³ in t / h	Volume throughput at 50 kg / m³ in t / h
<b>HSM VK 1206</b>	9,2	-	160	42.7	8.2	99	1.98	-
<b>HSM VK 2306</b>	9,2	-	240	64.0	12.3	66	1.32	3.29
	15	-	240	64.0	6.7	121	2.42	6.04
<b>HSM VK 4812 P</b>	15	-	480	58.2	24.5	151	3.03	7.57
	22	-	480	58.2	18.2	204	4.08	10.21
<b>HSM VK 6015</b>	30	-	720	128.0	23.7	128	2.57	6.41
	45	-	720	128.0	16.5	184	3.68	9.19
	55	45	720	128.0	13.2	231	4.62	11.55
	75	55	720	128.0	10.4	291	5.81	14.53
	90	75	720	128.0	8.9	340	6.80	16.99
<b>HSM VK 8818</b>	90	75	880	106.7	12.8	417	8.34	20.85
	45 + 45	30 + 30	880	106.7	12.8	418	8.35	20.89
	55 + 55	45 + 45	880	106.7	8.3	643	12.86	32.14
	90	75	1000	121.2	12.8	417	8.34	20.85
	45 + 45	30 + 30	1000	121.2	12.8	418	8.35	20.88
	55 + 55	45 + 45	1000	121.2	8.3	643	12.86	32.14
<b>HSM VK 12018</b>	45 + 45	30 + 30	1200	99.2	15.5	506	10.12	25.31
	55 + 55	45 + 45	1200	99.2	10.0	786	15.73	39.32
	75 + 75	55 + 55	1200	99.2	8.8	887	17.74	44.36
<b>HSM VK 15020</b>	55 + 55	45 + 45	1500	124.0	15.6	557	11.14	27.86
	75 + 75	55 + 55	1500	124.0	11.4	767	15.34	38.35
	-	75 + 75	1500	124.0	10.0	873	17.45	43.64

## The decisive plus on top of all the advantages: the HSM Service.

We deliver quality and are also responsible for this after the sale. We take service seriously, and are committed to helping our customers in the best way possible. This not only applies to our headquarters but also in all HSM service centres in Germany and all over the world.



- On-site specialist advice from experienced consultants in the sales and project teams
- Arranging meetings between the customer, field service and project team
- Implementation of special solutions
- Transport organisation; coordination of other partners
- Installation, instructions and start-up
- System operation support
- Maintenance, servicing and upkeep
- Maintenance contracts
- Continuous customer support





Motor in kW	Voltage / Frequency	Machine dimensions (W x L x H) in mm	Machine weight in kg	Strapping
2.2 / 4.0	3 x 400 V / 50 Hz	990 x 3826 x 1800	1150	3-fold with polyester type
4	3 x 400 V / 50 Hz	1870 x 1294 x 2985	2290	4-fold with wire
30	3 x 400 V / 50 Hz	2860 x 2380 x 4260	8700	-

Bale weight in kg with 1200 mm bale length	Bale size W x H x L in mm	Bale/channel crosssection W x H in mm	Strapping x-fold	Loading aperture W x L in mm	Loading volume in m <sup>3</sup>	Tank capacity in l	Weight in t	Model
up to 100	750 x 500 x var.	750 x 500	3	670 x 600	0.23	123	3.4	<b>HSM VK 1206</b>
up to 130	750 x 500 x var.	750 x 500	3	670 x 600	0.23	123	3.5	<b>HSM VK 2306</b>
up to 130	750 x 500 x var.	750 x 500	3	670 x 600	0.23	300	3.9	
up to 300	1100 x 750 x var.	1100 x 750	4	1020 x 1250	1.03	300	10.0	<b>HSM VK 4812</b>
up to 300	1100 x 750 x var.	1100 x 750	4	1020 x 1250	1.03	300	10.0	
up to 270	750 x 750 x var.	750 x 750	4	620 x 1500	0.84	630	24.0	
up to 270	750 x 750 x var.	750 x 750	4	620 x 1500	0.84	630	24.0	
up to 270	750 x 750 x var.	750 x 750	4	620 x 1500	0.84	1250	24.0	<b>HSM VK 6015</b>
up to 270	750 x 750 x var.	750 x 750	4	620 x 1500	0.84	1250	24.0	
up to 270	750 x 750 x var.	750 x 750	4	620 x 1500	0.84	1250	24.0	
up to 450	1100 x 750 x var.	1100 x 750	5	970 x 1800	1.49	2000 (1250)	33.0	
up to 450	1100 x 750 x var.	1100 x 750	5	970 x 1800	1.49	2000	33.0	
up to 450	1100 x 750 x var.	1100 x 750	5	970 x 1800	1.49	3000 (2000)	33.0	<b>HSM VK 8818</b>
up to 450	1100 x 750 x var.	1100 x 750	5	970 x 1800	1.49	2000 (1250)	33.0	
up to 450	1100 x 750 x var.	1100 x 750	5	970 x 1800	1.49	2000	33.0	
up to 450	1100 x 750 x var.	1100 x 750	5	970 x 1800	1.49	3000 (2000)	33.0	
up to 600	1100 x 1100 x var.	1100 x 1100	5	970 x 1800	2.18	2000	38.0	
up to 600	1100 x 1100 x var.	1100 x 1100	5	970 x 1800	2.18	3000 (2000)	38.0	<b>HSM VK 12018</b>
up to 600	1100 x 1100 x var.	1100 x 1100	5	970 x 1800	2.18	3000	38.0	
up to 650	1100 x 1100 x var.	1100 x 1100	5	970 x 2000	2.42	3000 (2000)	45.0	
up to 650	1100 x 1100 x var.	1100 x 1100	5	970 x 2000	2.42	3000	45.0	<b>HSM VK 15020</b>
up to 650	1100 x 1100 x var.	1100 x 1100	5	970 x 2000	2.42	3000	45.0	

#### Explanations of the technical data:

Throughput:	Max. volume that can be processed in one hour.
Working width:	Maximum effective width of the feed opening.
Pressing power:	Cylinder piston surface multiplied by the maximum hydraulic pressure (theoretical value).
Motor:	Rated power of driving motor.
Voltage / Frequency:	Three-phase power supply.
Loading aperture:	Size of the opening through which material can be loaded.
Loading height:	Height from floor to loading edge.
Bale weight:	The bale weight varies depending on the type, humidity and condition of the compressed material and the bale length or height.
Bale size:	The height/length of the bales varies depending on the expansion force of the compressed material.
Cycle time in idle operation (theor.):	The time it takes for the press ram to move down without material and return idling to the home position. The pressing time does not depend on the material.

Volume throughput in idle operation (theor.):	The maximum volume that can be theoretically pressed in one hour without interruption of the pressing procedure for loading or strapping. It is calculated by dividing the press chamber volume by the pressing time.
Press chamber size:	The press chamber is the space below the press ram in the home position.
Dimensions of machine:	External dimensions of the machine when set up for operation.
Transport height:	Height for moving to the installation site (without hand pallet truck).
Machine weight:	Net weight of the machine without packaging, loaded material or options.
Strapping:	Information concerning the number of times the bales are strapped.

Technical and design modifications reserved. All technical data and dimensions are approximate values.

# HSM – the company

## Shredding and Compressing.



Since 1971, HSM has been pursuing a clear strategy – a consistent commitment to “Made in Germany” quality. This product and service quality is the key to our success in both the office technology and environmental technology business sectors. As a specialist in products and services for data protection as well as technologies for improving logistics and recycling processes, HSM is one of the world’s leading providers in these sectors.

**Contact us now! We are always glad to help.**

### Head office in Germany:

HSM GmbH + Co. KG · Austraße 1-9 · 88699 Frickingen / Germany  
Tel. +49 7554 2100-0 · Fax +49 7554 2100-160  
info@hsm.eu · www.hsm.eu

### E-mail / hotline:

Gratis Hotline  
DE, AT, IT, ES, BE, NL, LU  
Tel. 00800 44 77 77 66

HSM Vertrieb Deutschland  
deutschland@hsm.eu

HSM Vertrieb Österreich  
austria@hsm.eu

HSM Vertrieb Schweiz  
schweiz@hsm.eu

HSM Verkoop België, Nederland,  
Luxemburg  
benelux@hsm.eu

HSM Commerciale Italia  
italia@hsm.eu

HSM Ventas Portugal  
iberia@hsm.eu

### HSM subsidiaries:

HSM Técnica de Oficina y  
Medioambiente España, S.L.U.  
Calle de José Echegaray, 10  
28100 Alcobendas, Madrid  
Spain  
Tel. +34 91 1034859  
Fax +34 91 1034858  
iberia@hsm.eu  
www.hsm.eu

HSM France SAS  
Parc de Genève  
240, Rue Ferdinand Perrier  
69800 Saint-Priest  
France  
Tél. +33 472 210580  
Fax +33 472 517481  
france@hsm.eu  
www.hsm.eu

HSM (UK) Ltd.  
14 Attwood Road / Zone 1  
Burntwood Business Park  
Burntwood · Staffordshire  
WS7 3GJ  
United Kingdom  
Tel. +44 1543 272-480  
Fax +44 1543 272-080  
sales.uk@hsm.eu  
www.hsm.eu

HSM Polska Sp. z o.o.  
ul. Emaliowa 28  
02-295 Warsaw  
Polska (Poland)  
Tel. +48 22 862-2369  
Fax +48 22 862-2368  
handlowy@hsm.eu  
www.hsm.eu

HSM of America LLC  
419 Boot Road  
Downingtown  
PA 19335  
USA  
Tel. +1 484 237-2308  
+1 800 613-2110  
Fax +1 484 237-2309  
customerservice@hsm.us  
info@hsm.us  
www.hsm.us

HSM China Ltd.  
Room 504, Building C  
Hangcheng Guangchang  
Nanfaxin Town  
Shunyi District  
Beijing, PRC, 101700  
China  
Tel. +86 10 61429168  
Fax +86 10 61429169  
info@hsm-china.cn  
www.hsm-china.cn