

HSM SECURIO C16 - 4 x 25 mm

Small, sleek and secure. A great shredder for private use or in a small office. With cutting rollers made from hardened steel and a pressure-sensitive safety element.



Technical data

| | | | |
|--|-------------------------|--|--------------------|
| Order number: | 1902111 | EAN: | 4026631035590 |
| Cutting type: | particle cut | Cutting size: | 4 x 25 mm |
| Security level (DIN 66399 / E-3 F-1 P-4 T-4 ISO/IEC 21964): | | Cutting capacity in sheets 80g/m²: | 6 - 7 |
| Autofeed in sheets: | - | Noise level (idle operation): | ca. 55 - 60 dB(A) |
| Intake width: | 225 mm | Container volume / collecting: | 25 l |
| Collection volume in sheets: | 230 | Power consumption: | 185 W |
| Voltage / Frequency: | 220-240 V / 50 Hz/60 Hz | Width x Depth x Height: | 366 x 258 x 455 mm |
| Machine weight: | 4.5 kg | | |

Product Information:



To empty the waste container, the housing top can be easily removed - a practical, recessed grip facilitates handling.



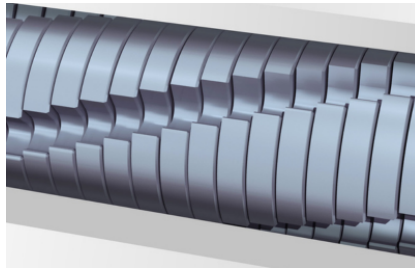
In stand-by mode, the document shredder does not consume any power.



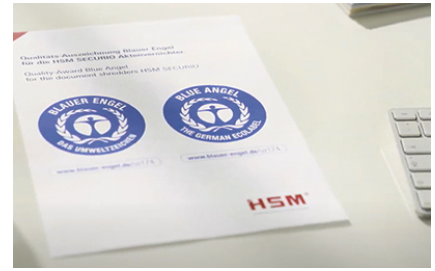
The high quality materials and proven HSM "Made in Germany" quality guarantee you are receiving a safe and durable machine.



User safety is paramount. A slight pressure on the safety element immediately stops the paper feed and prevents unintentional entry into the machine.



The hardened steel cutting rollers with a lifetime warranty can easily cope with staples and paper clips and guarantee durability.



The document shredder has been awarded the Blue Angel certificate for its durable construction, low energy consumption and the use of environmentally friendly materials.



The quiet operating mode minimises noise development in the workplace which is an important consideration for your staff.



The filling level of the waste container can be seen at all times through the inspection window.



The operation is very easy: the device starts automatically when fed paper and automatically stops after shredding is complete.

