



HSM V-Press 605

The space-saving vertical baling press with a wide-opening double door reliably and economically reduces the volume of cardboard, die-cut waste, paper or film. The pressing process starts immediately after closing the door. Bale ejection is automatic. Product variant for standard power connection (single-phase)

Technical data

| | | | |
|-------------------------|--------------|-------------------------|----------------------|
| Order number: | 6112161 | Pressing power: | 57 kN |
| Maximum bale weight: | 70 kg | Width x Depth x Height: | 1198 x 823 x 1986 mm |
| Loading aperture (WxH): | 800 x 495 mm | | |

Product Information:



The powerful system is designed as Plug&Press and can be put into operation immediately at the installation site



To fill the press, the upper half of the doors is swung to the right



Special retaining claws optimize the compression of the pressing material.



Automatic start of the pressing process after closing the door



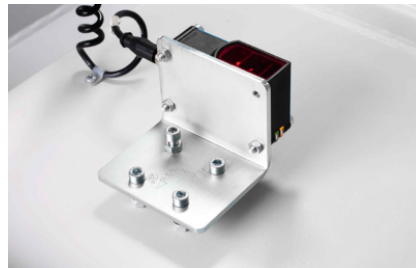
Convenient membrane keypad with text display, which shows the current status of the machine



Hand wheel door lock - Easy to handle thanks to counter-rotating thread for quick opening and closing



Massive press ram and extremely robust press plate guidance



HSM TCS (Torsion Control System) for monitoring press ram movement



Manual bale strapping with continuous polyester tape



Suitable for cardboard as well as film

