

HSM Pure 320 - 3.9 x 30 mm



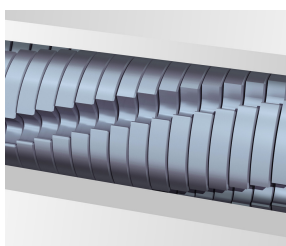
HSM Pure 320 document shredder

An asset to the small office. This timeless, modern document shredder is quiet in operation and perfect for the workplace. With a lifetime warranty on the sturdy steel cutting rollers and energy saving management with stand-by operation.

Technical data

Order number:	2333121	Intake width:	230 mm
EAN	4026631059916	Container volume / collecting:	25 l
Cutting type:	particle cut	Collection volume in sheets (80 g):	350
Cutting size:	3,9 x 30 mm	Noise level (idle operation):	ca. 55 dB(A)
Security level (DIN 66399):	E-3 F-1 P-4 T-4	Width x Depth x Height:	365 x 255 x 556 mm
Cutting capacity in sheets 80g/m²:	8 - 9	Weight:	11,1 kg
Power consumption:	360 W	Shredder material:	Paper, Staples and paper clips, Credit card
Voltage / Frequency:	220-240 V / 50 Hz		

Product information



The hardened steel cutting rollers with a lifetime warranty can easily cope with staples and paper clips and guarantee durability.



The waste container can be easily removed and emptied.



The full bin is indicated via the display and the machine switches off automatically.

HSM®



Quiet operation

The quiet operating mode minimises noise development in the workplace which is an important consideration for your staff.



Low power consumption

The stand-by and automatic switch-off features ensure a high degree of energy saving when the shredder is not in use.



Anti-paper jam function

The paper feed with overload protection reduces paper jams and sustains the high throughput of paper.



High level of user safety

User safety is paramount. A slight pressure on the safety element immediately stops the paper feed and prevents unintentional entry into the machine.



Automatic start/stop

The operation is very easy: the device starts automatically when fed with paper and automatically stops after shredding is complete.



Lifetime warranty on solid steel cutting rollers at security levels P-2 to P-5 (according to ISO/IEC 21964).



* Nicht für / not for HSM Pure 320