

# HSM SECURIO C14 - 4 x 25 mm



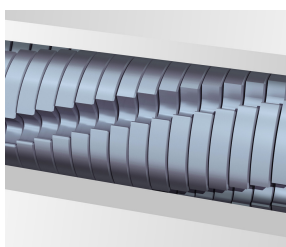
## HSM SECURIO C14 document shredder

Space-saving, quiet and reliable: the shredder for your home office. No power use in stand-by, has a high degree of user safety – and all of this in a great, modern design.

### Technical data

<b>Order number:</b>	2253111	<b>Container volume / collecting:</b>	20 l
<b>EAN</b>	4026631053983	<b>Collection volume in sheets (80 g):</b>	184
<b>Cutting type:</b>	particle cut	<b>Noise level (idle operation):</b>	ca. 55 - 60 dB(A)
<b>Cutting size:</b>	4 x 25 mm	<b>Width x Depth x Height:</b>	366 x 258 x 405 mm
<b>Security level (DIN 66399):</b>	E-3   F-1   P-4   T-4	<b>Weight:</b>	4,5 kg
<b>Cutting capacity in sheets 80g/m²:</b>	5 - 6	<b>Related product line:</b>	SECURIO
<b>Power consumption:</b>	160 W	<b>Shredder material:</b>	Paper, Staples and paper clips, Credit card
<b>Voltage / Frequency:</b>	220-240 V / 50 Hz/60 Hz		
<b>Intake width:</b>	225 mm		

### Product information



The hardened steel cutting rollers with a lifetime warranty can easily cope with staples and paper clips and guarantee durability.



In stand-by mode, the document shredder does not consume any power.



To empty the waste container, the housing top can be easily removed – a practical, recessed grip facilitates handling.

# HSM®



### Quiet operation

The quiet operating mode minimises noise development in the workplace which is an important consideration for your staff.



### Blue Angel

The document shredder has been awarded the Blue Angel certificate for its durable construction, low energy consumption and the use of environmentally friendly materials.



### Anti-paper jam function

The paper feed with overload protection reduces paper jams and sustains the high throughput of paper.



### High level of user safety

User safety is paramount. A slight pressure on the safety element immediately stops the paper feed and prevents unintentional entry into the machine.



### Automatic start/stop

The operation is very easy: the device starts automatically when fed paper and automatically stops after shredding is complete.

